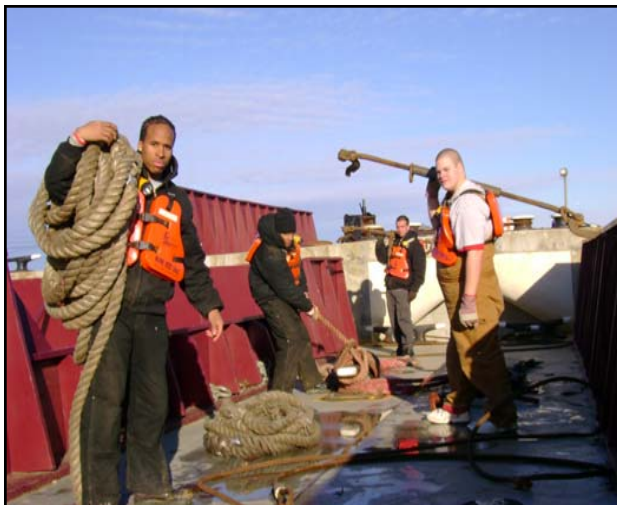


## DECKHAND CAREER POSSIBILITIES

FOR THOSE WHO WANT TO BE PART OF THE INLAND MARINE TOWING INDUSTRY AND TO ADVANCE WITHIN IT'S RANKS, THE BELOW ILLUSTRATES TYPICAL PAY SCALES AND THE DIFFERENT POSITIONS ONE CAN ADVANCE TO WITH FURTHER CERTIFICATIONS AND WORK EXPERIENCE:

DECKHAND	\$85.00 TO \$180.00 / DAY
COOK	\$120.00 TO \$200.00 / DAY
TANKER MAN	\$180.00 TO \$210.00 / DAY
LEAD MAN	\$130.00 TO \$280.00 / DAY
MATE	\$180.00 TO \$280.00 / DAY
ENGINEER	\$270.00 TO \$360.00 / DAY
PILOT	\$300.00 TO \$460.00 / DAY
RELIEF CAPTAIN	\$320.00 TO \$525.00 / DAY
CAPTAIN	\$320.00 TO \$525.00 / DAY



## OUR MISSION

TO PROVIDE HIGH QUALITY EDUCATION AND JOB TRAINING OPPORTUNITIES TO AT-RISK YOUTH IN AN EFFORT TO ENHANCE THEIR PERSONAL AND PROFESSIONAL GROWTH AND DEVELOPMENT.

WE ARE DEDICATED AND FOCUSED ON STRATEGIES FOR LINKING EMPLOYMENT, EDUCATION AND ECONOMIC DEVELOPMENT TO BUILD THE HIGHLY SKILLED WORKFORCE NEEDED IN TODAY'S AND TOMORROW'S WORKPLACE.



## STUDENT ENROLLMENT

### Student Intake Specialist

Phone: 270.389.2419 Ext. 4313

Fax: 270.389.2369

### Program Inquiries:

Career Technical Training

Coordinator

Phone: 270.389.5312

Fax: 270.389.5359

### Deckhand Instructor

Phone: 270.389.2419 Ext: 3321

OHIO VALLEY MARINE SERVICE, INC.

## DECKHAND TRAINING



BUILDING TOMORROW'S FUTURES TODAY



### CONTACT:

EARLE C. CLEMENTS JOB CORPS ACADEMY

2302 US HWY 60 EAST

MORGANFIELD, KENTUCKY 42437

270.389.2419 EXT: 5312

ACCREDITED BY THE COUNCIL ON

OCCUPATIONAL EDUCATION

# DECKHAND TRAINING



## INLAND WATERWAY SYSTEM



### PROGRAM DESCRIPTION

THIS FOUR MONTH PROGRAM PREPARES AN INDIVIDUAL FOR ENTRY LEVEL WORK IN THE INLAND MARINE TOWING INDUSTRY. THIS COURSE TRAINS AN INDIVIDUAL TO SAFELY; SECURE BARGES AND EQUIPMENT TO TOWBOATS, STAND WATCH, PERFORM LOCKING PROCEDURES, LIFT, CARRY AND WORK WITH HEAVY RIGGING, PUMP OUT LEAKING BARGES, SPLICE LINES/MAKE BUMPERS, SET NAVIGATION LIGHTS, UTILIZE BOTH RADIO AND HAND SIGNAL COMMUNICATIONS AND PERFORM THE MAINTENANCE AND CLEANING OF TOWBOATS AND BARGES.

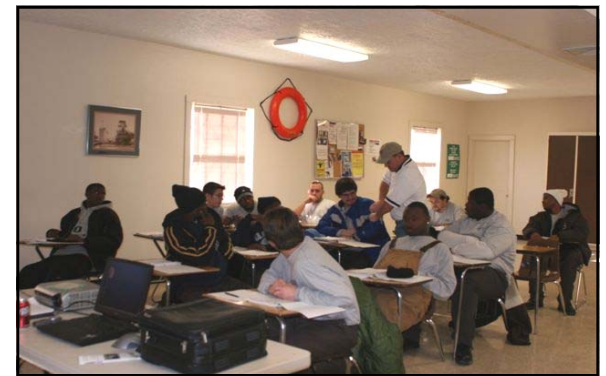
### TO BE SUCCESSFUL, A GRADUATE MUST

- CONSIDER RELOCATING FOR EMPLOYMENT (ASSISTANCE PROVIDED)
- REMAIN DRUG FREE
- BE ABLE TO BE AWAY FROM HOME FOR UP TO 28 DAYS AT A TIME ON A VESSEL
- BE ABLE TO WORK ROTATING SCHEDULES OF SIX HOURS ON AND SIX HOURS OFF
- RESPOND POSITIVELY TO SUPERVISION
- WORK IN ALL TYPES OF WEATHER
- NOT FEAR HEIGHTS, WATER OR CONFINED SPACES



### ENTRANCE REQUIREMENTS

- MUST BE 18–24 YEARS OLD
- HAVE A GED/HSD (OR EARN AT THE ACADEMY)
- HAVE A VALID DRIVERS LICENSE (OR EARN AT THE ACADEMY)
- HAVE A FAVORABLE BACKGROUND CHECK (NO MULTIPLE DRUG/FELONY CONVICTIONS)
- PASS DOT DRUG TEST AND PHYSICAL



THE DECKHAND TRAINING PROGRAM IS SPONSORED BY OHIO VALLEY MARINE SERVICE, INC., SERVING THE INLAND MARINE INDUSTRY SINCE 1975. THE INSTRUCTOR HAS OVER 11 YEARS EXPERIENCE TRAINING DECKHANDS AND HAS WORKED WITH INDUSTRY LEADING INLAND MARINE TOWING ORGANIZATIONS. TRAINING FACILITIES INCLUDE TWO LARGE CLASSROOMS, MOCK WHEEL HOUSE WITH MULTIPLE BARGE CONFIGURATIONS, RESIDENTIAL LIVING QUARTERS AND INCORPORATES EQUIPMENT CURRENTLY USED IN THE INDUSTRY.

THE CLASSROOM PORTION TAKES ONE MONTH TO COMPLETE AND THE PAID HANDS ON TRAINING CONSISTS OF MULTIPLE TOURS EQUALING 56 DAYS ABOARD CERTIFIED TRAINING PARTNERS' VESSELS. A SUCCESSFUL STUDENT HAS THE ABILITY TO BE PROMOTED TO LEAD MAN OR MATE WITHIN 6 MONTHS. PLACEMENT SERVICES ARE AVAILABLE UPON PROGRAM COMPLETION.

IF INTERESTED IN BEING TRAINED IN A HIGH DEMAND, GOOD PAYING CAREER, CONTACT A STUDENT INTAKE SPECIALIST AT 270.389.2419 EXT. 4313 OR 270.389.5339 PROGRAM INQUIRIES CONTACT: 270.389.5312 OR 270.389.2419 EXT. 3321.

**TRAINED DECKHANDS ARE  
NEEDED IN THIS INDUSTRY NOW!**

#### USEFUL WEBSITES:

Earle C. Clements: <http://earlecclements.jobcorps.gov>

Ohio Valley Marine Service, Inc.: [www.ovmarine.com](http://www.ovmarine.com)

The American Waterways Operators: [www.americanwaterways.com](http://www.americanwaterways.com)